

Symbol Table

- ◀▶ Signal Direction on
- ▲ Active High
- ▼ Active Low
- [] Voltage

START	END	Signal Name	START	END	Signal Name	
CN225A1	CN128	GN1	1	+5VE	51	PCIA268
		GN2	2	+5VE	52	PCIA268
		GN3	3	+5VE	53	GN2
		GN4	4	+5VE	54	GN2
		GN5	5	+5VE	55	PCIA268
		GN6	6	+5VE	56	PCIA268
		GN7	7	+5VE	57	PCIA268
		GN8	8	+5VE	58	PCIA268
		GN9	9	+5VE	59	PCIA268
		GN10	10	+5VE	60	PCIA268
		GN11	11	+5VE	61	PCIA268
		GN12	12	+5VE	62	PCIA268
		GN13	13	+5VE	63	PCIA268
		GN14	14	+5VE	64	PCIA268
		GN15	15	+5VE	65	PCIA268
		GN16	16	+5VE	66	PCIA268
		GN17	17	+5VE	67	PCIA268
		GN18	18	+5VE	68	PCIA268
		GN19	19	+5VE	69	PCIA268
		GN20	20	+5VE	70	PCIA268
		GN21	21	+5VE	71	PCIA268
		GN22	22	+5VE	72	PCIA268
		GN23	23	+5VE	73	PCIA268
		GN24	24	+5VE	74	PCIA268
		GN25	25	+5VE	75	PCIA268
		GN26	26	+5VE	76	PCIA268
		GN27	27	+5VE	77	PCIA268
		GN28	28	+5VE	78	PCIA268
		GN29	29	+5VE	79	PCIA268
		GN30	30	+5VE	80	PCIA268
		GN31	31	+5VE	81	PCIA268
		GN32	32	+5VE	82	PCIA268
		GN33	33	+5VE	83	PCIA268
		GN34	34	+5VE	84	PCIA268
		GN35	35	+5VE	85	PCIA268
		GN36	36	+5VE	86	PCIA268
		GN37	37	+5VE	87	PCIA268
		GN38	38	+5VE	88	PCIA268
		GN39	39	+5VE	89	PCIA268
		GN40	40	+5VE	90	PCIA268
		GN41	41	+5VE	91	PCIA268
		GN42	42	+5VE	92	PCIA268
		GN43	43	+5VE	93	PCIA268
		GN44	44	+5VE	94	PCIA268
		GN45	45	+5VE	95	PCIA268
		GN46	46	+5VE	96	PCIA268
		GN47	47	+5VE	97	PCIA268
		GN48	48	+5VE	98	PCIA268
		GN49	49	+5VE	99	PCIA268
		GN50	50	+5VE	100	PCIA268

PRINTER (G130/G131/G382) POINT TO POINT DIAGRAM

(G130/G131/G382) ELECTRICAL COMPONENT LAYOUT

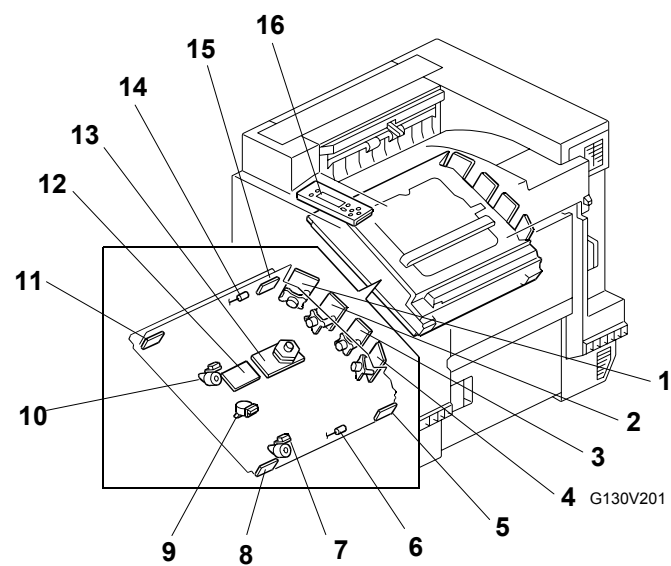


Fig. 1

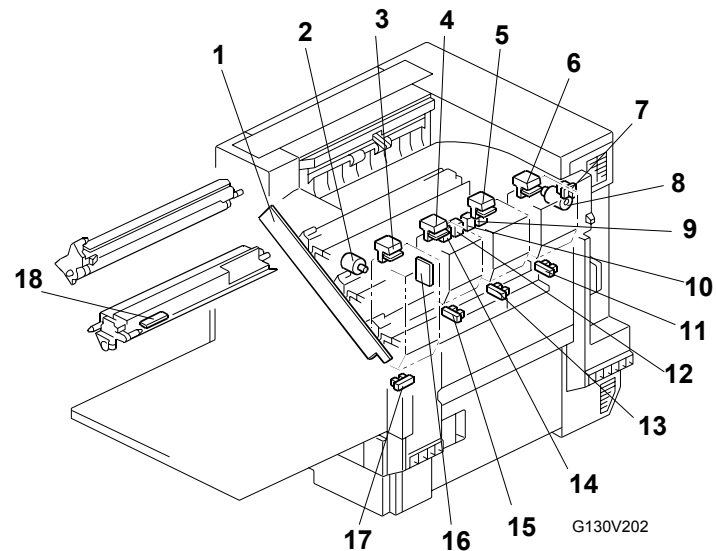


Fig. 2

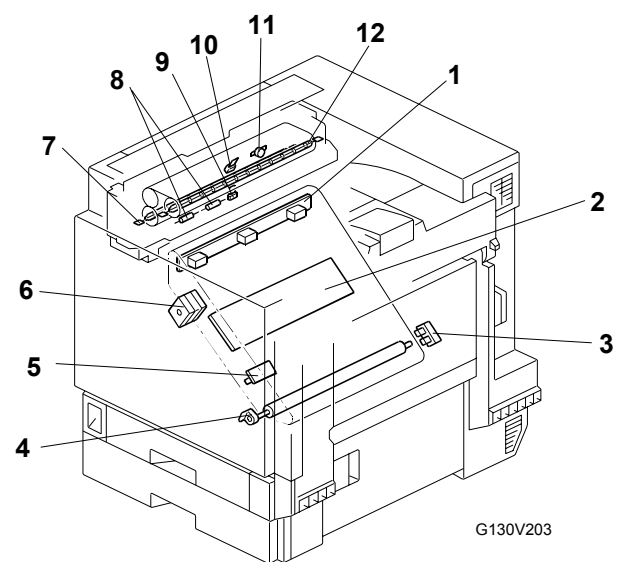


Fig. 3

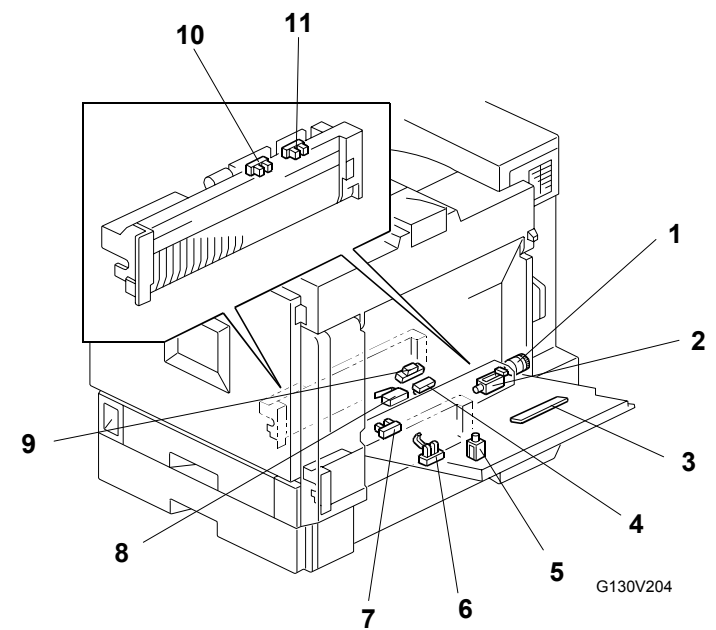


Fig. 4

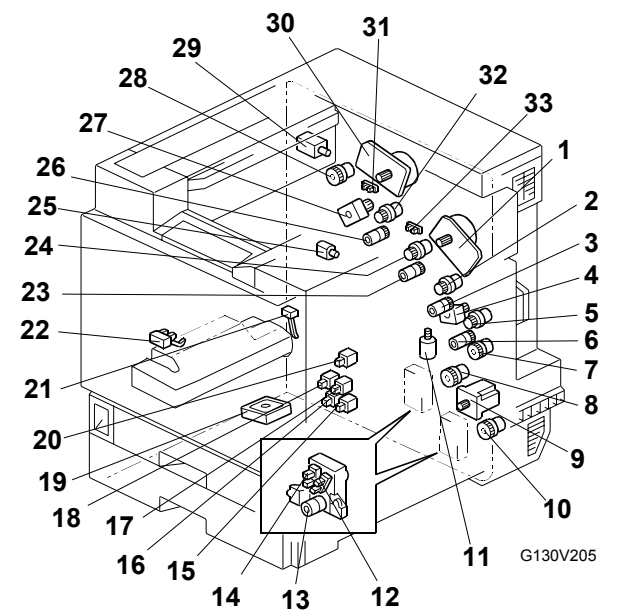


Fig. 5

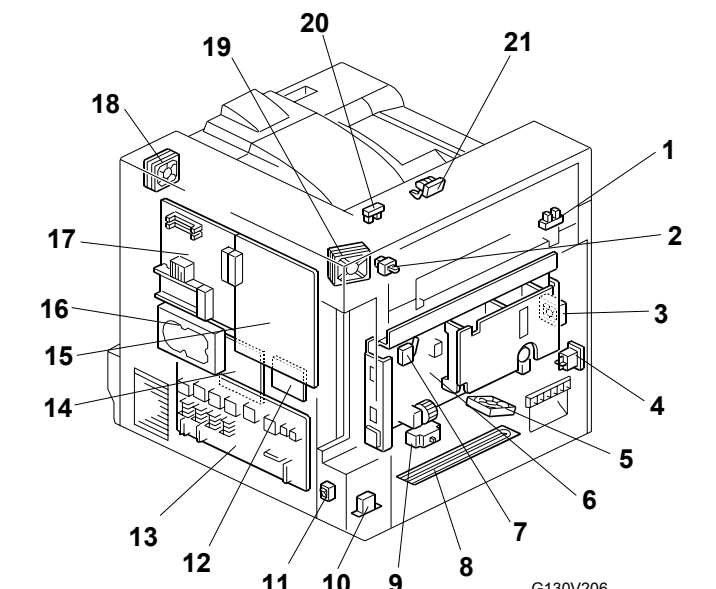


Fig. 6

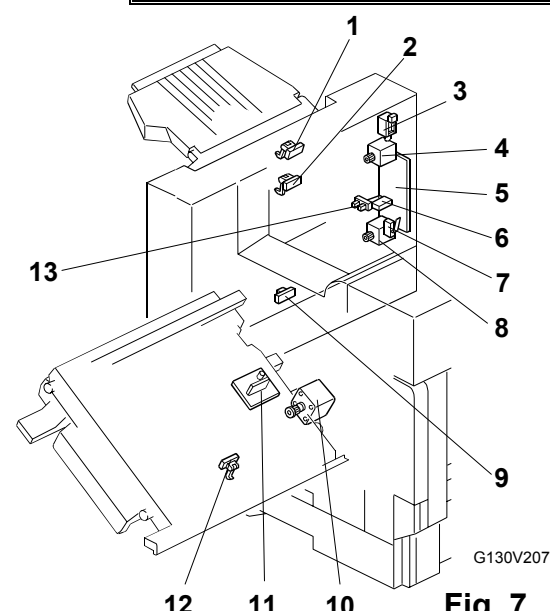


Fig. 7

Symbol	Description	Index No.	P-to-P
Printed Circuit Boards			
PCB1	LD Unit-Y	1-1	G16
PCB2	LD Unit-K	1-2	G15
PCB3	LD Unit-M	1-3	G14
PCB4	LD Unit-C	1-4	G14
PCB5	Laser Synchronizing Detector Board-CM - S	1-5	E14
PCB6	Laser Synchronizing Detector Board-CM - E	1-8	E14
PCB7	Laser Synchronizing Detector Board-KY - S	1-11	E15
PCB8	Laser Synchronizing Detector Board-KY - E	1-15	E16
PCB9	Memory Chip - K	2-3	J7
PCB10	Memory Chip - Y	2-4	H11
PCB11	Memory Chip - C	2-5	H11
PCB12	Memory Chip - M	2-6	H10
PCB13	High Voltage Supply Board - Transfer	3-2	F8
PCB14	Paper Width Detection Board	4-3	J6
PCB15	PSU (Power Supply Unit)	6-6	B6
PCB16	DRB	6-12	G5
PCB17	High Voltage Supply Board - C, B	6-13	G9
PCB18	BCU	6-15	I9
PCB19	Operation Panel	1-16	J13
PCB20	SUB PSU	6-14	A3
PCB21	Duplex Control Board	7-5	C10
PCB22	Duplex Drive Board	7-11	B10
PCB23	Transfer Rotation Encoder	3-4	F7
PCB24	Polygon Mirror Motor Drive Board	1-12	F12
PCB25	HDD	6-16	K1
PCB26	Controller	6-17	J2
Motors			
M1	Paper Cooling Fan Motor	5-19	J3
M2	3rd Mirror Positioning Motor-M	1-7	G12
M3	3rd Mirror Positioning Motor-C	1-9	G12
M4	3rd Mirror Positioning Motor-Y	1-10	G12
M5	Polygon Motor	1-13	E12
M6	Air Pump - CK	2-2	J8
M7	Air Pump - MY	2-7	J8
M8	Transfer Unit Drive Motor	3-6	F7
M9	Development Drive Motor-CMY	5-1	F6
M10	Drum Drive Motor-CMY	5-4	H6
M11	Paper Feed Motor	5-9	H5
M12	Transfer Belt Contact Motor	5-11	J8
M13,14	Tray Lift Motor	5-13	J12
M15	Drum Drive Motor-K	5-27	H5
M16	Development Drive Motor-K	5-30	F6
M17	PSU Cooling Fan Motor 1	6-5	E2
M18	Laser Optics Housing Cooling Fan Motor	6-18	J9
M19	Fusing Fan Motor	6-19	F2
M20	Waste Toner Vibration Motor	5-25	J4
M21	Duplex Feed Motor	7-10	A11
M22	Duplex Inverter Motor 1	7-4	D10
M23	Duplex Inverter Motor 2	7-8	D9
M24	PCU Cooling FAN Motor 2	6-3	E2
Clutches			
CL1	By-pass Feed Clutch	4-1	J6
CL2	Development Clutch-C	5-2	J3
CL3	Toner Supply Clutch-C	5-3	J5
CL4	Development Clutch-M	5-5	J7
CL5	Toner Supply Clutch-M	5-6	J7
CL6	Registration Clutch	5-7	J10
CL7	Tray 1 Paper Feed Clutch	5-8	J10
CL8	Tray 2 Paper Feed Clutch	5-10	J10
CL9	Toner Supply Clutch-Y	5-23	J5
CL10	Development Clutch-Y	5-24	J3
CL11	Toner Supply Clutch-K	5-26	J5
CL12	Fusing Clutch	5-28	F2

Symbol	Description	Index No.	P-to-P
Sensors			
S1	Paper Overflow Sensor	6-21	D2
S2	Toner End Sensor - M	2-11	J11
S3	Toner End Sensor - C	2-13	J11
S4	Toner End Sensor - Y	2-15	J11
S5	Humidity Sensor	2-16	J16
S6	Toner End Sensor - K	2-17	J6
S7	TD Sensor - M	2-18	J7
S8	TD Sensor - C	2-18	J5
S9	TD Sensor - Y	2-18	J4
S10	TD Sensor - K	2-18	J4
S11	ID Sensor	3-1	G8
S12	Transfer Belt Sensor	3-3	J5
S13	Relay Sensor	4-4	J15
S14	Vertical Transport Sensor	4-6	J10
S15	By-pass Paper End Sensor	4-7	J6
S16	Registration Sensor	4-9	J7
S17,18	Paper End Sensor	4-10	J15, J16
S19,20	Paper Lift Sensor	4-11	J15, J16
S21	Tray 1 Paper Height Sensor 2	5-12	J12
S22	Tray 2 Paper Height Sensor 2	5-12	J9
S23	Tray 1 Paper Height Sensor 1	5-14	J11
S24	Tray 2 Paper Height Sensor 1	5-14	J12
S25	Belt Mark Sensor	3-5	F8
S26	Duplex Feed Sensor	7-12	B11
S27	Waste Toner Sensor	5-22	J3
S28	Drum Gear Position Sensor - K	5-31	J3
S29	Drum Gear Position Sensor - CMY	5-33	J5
S30	Fusing Exit Sensor	6-1	D2
S31	Paper Exit Sensor	6-20	E2
S32	Duplex Exit Sensor	7-1	D11
S33	Duplex Exit Sensor 2	7-2	D11
S34	Duplex Exit Sensor 3	7-13	D11
S35	Duplex Inverter Sensor	7-9	D11
Switches			
SW1	Right Door Switch	2-7	J15
SW2	Vertical Transport Switch	4-8	E6
SW3	Tray 2 Paper Size Switch - 4	5-15	J11
SW4	Tray 2 Paper Size Switch - 2	5-16	J11
SW5	Tray 2 Paper Size Switch - 3	5-17	J11
SW6	Tray 2 Paper Size Switch - 1	5-18	J11
SW7	Tray 1 Set Switch	5-20	J15
SW8	Waste Toner Bottle Set Switch	5-21	J3
SW9	Left Door Switch	6-2	D2
SW10	Main Switch	6-4	D6
SW11	Front Door and Left Door Switch	6-7	A7
SW12	Anti-condensation Heater Switch (Option)	6-11	E6
SW13	Duplex Door Switch	7-6	D10
SW14	Duplex Inverter Unit Switch	7-7	D10
SW15	PCU/Development Unit Set Switch	2-1	K8

Symbol	Description	Index No.	P-to-P
Solenoids			
SOL1	Air Flow Valve Solenoid - M	2-9	J9
SOL2	Air Flow Valve Solenoid - C	2-10	J9
SOL3	Air Flow Valve Solenoid - Y	2-12	J9
SOL4	Air Flow Valve Solenoid - K	2-14	J10
SOL5	By-pass Pick-up Solenoid	4-2	J6
SOL6	Grip Roller Release Solenoid	4-5	J10
SOL7	Exit Junction Gate Solenoid	5-29	F2
SOL8	Duplex Junction Gate Solenoid	7-3	D10
Lamps			
L1	Pressure Roller Fusing Lamp	3-7	B2
L2	Heating Roller Fusing Lamp	3-12	B2
Thermistors			
TH1	Thermistor 2	1-6	G13
TH2	Thermistor 1	1-14	G13
TH3	Pressure Roller Thermistor	3-9	C1
TH4	Heating Roller Thermistor	3-10	C1
Thermofuse/Stat			
THO1	Pressure Roller Thermofuse	3-8	B2
THO2	Heating Roller Thermostat	3-11	B2
Others			
CB1	Earth Leakage Circuit Breaker	6-9	A8
CC1	Choke Coil	6-10	A8
H1	Anti-condensation Heater - Tray (Option)	6-8	D6